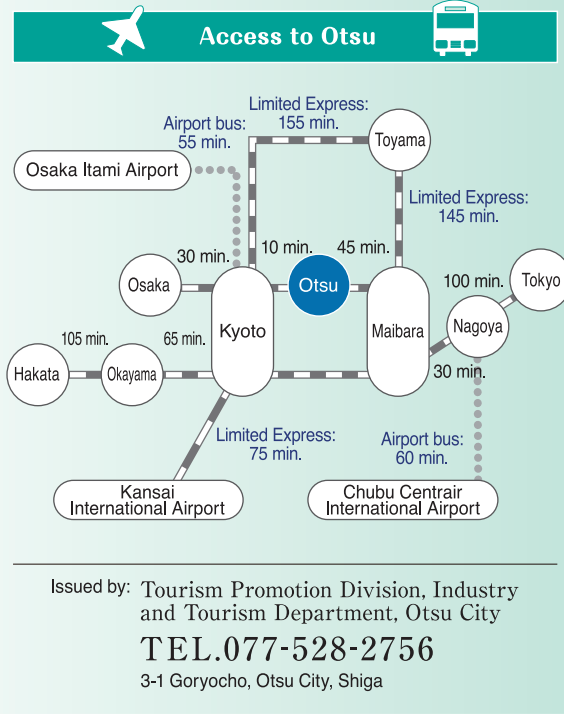


A Photo Adventure
Explore & Capture

Bike Rental Facility		Find rental bikes at the following locations in Otsu City. Some locations also offer e-bikes and sport bikes. *Availability of bikes is subject to change.				
Facility Name	Holidays	Rental Times	Rental Fees	Number of Bikes	Phone Number	
A Katata Tourism Association (Kozoku no Sato Museum)	Wednesdays and during the year-end/New Year holidays	10:00 ~16:00	JPY 250/1 hour JPY 1,000/1 day (4 hours or more)	5 standard bikes (including 1 bike for school-aged children) 4 e-bikes	077-574-1685	
B Ogoto Onsen Tourism Park	Year-end/New Year holidays Occasionally closes for maintenance.	9:00 ~17:00	JPY 300/1 hour JPY 1,200/1 day (4 hours or more)	4 e-bikes	077-578-3750	
C Sakamoto Tourism Association	Year-end/New Year holidays	9:30 ~16:30	JPY 250/1 hour JPY 1,000/1 day (4 hours or more)	11 e-bikes	077-578-6565	
D Otsu Port Parking Lot	None	7:30 ~24:00	* Free Available only for customers using the parking lot	13 standard bikes (including 3 bikes for children)	077-521-0288	
E Otsu Station Tourist Information Center	None	9:00 ~18:00	JPY 250/1 hour JPY 1,800/1 day	6 e-bikes 6 cyclocross bikes	077-522-3830	
F Biwako Otsukan	None	9:00 ~19:00	JPY 250/1 hour JPY 1,800/1 day	6 standard bikes 2 sport bike type	077-511-4187	
G Biwako Hotel	None	9:00 ~19:00	JPY 1,300 + JPY 300 for theft / damage insurance fee	4 standard bikes	077-524-7111	
H Lake Biwa Otsu Prince Hotel	None	7:00 ~19:00	JPY 400/1 hour JPY 200 per additional hour	14 standard bikes (including 4 bikes for children)	077-521-1111	
I Ekirin-kun Ishiyama Shop	We will be closed or change our business hours during the year-end/New Year holidays.	6:30 ~21:00	JPY 500 a rental (e-bike rental for JPY 800/day) JPY 2,500/Monthly rental	More than 50 standard bikes	077-537-0120	
J Biwaichi Bike (C-PORT-able)	December 16 to February 19 (Closed during Winter)	9:00 ~17:00	JPY 5,500 per day JPY 3,000/5 hours Extended Rental Rates: JPY 5,500/ Same-day return + each additional day: JPY 3,300/day	300 types of bikes	077-548-6572	

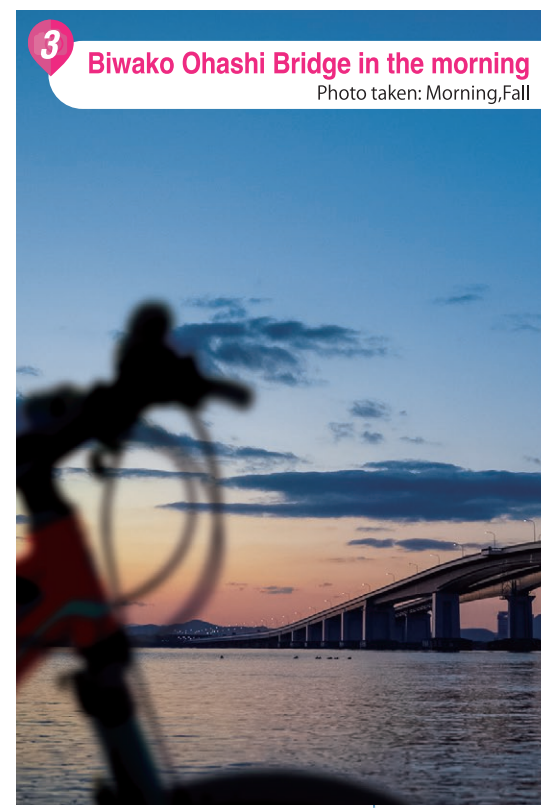
Based on information as of March 2025.



1 Cycling Road
Photo taken: Daytimes,Fall



2 Lakeside Scenery in Hira
Photo taken: Daytimes,Summer



3 Biwako Ohashi Bridge in the morning
Photo taken: Morning,Fall



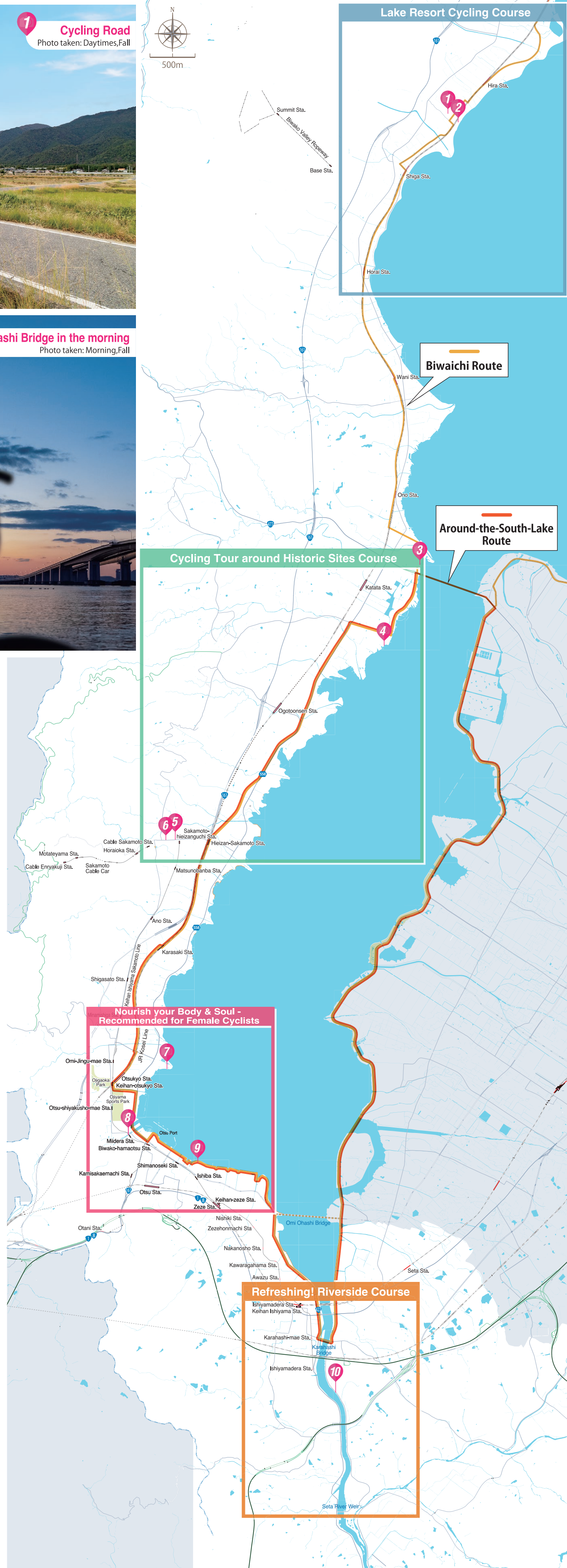
4 Ukimido on the Lake
Photo taken: Morning,Winter



5 In front of Hiyoshi Taisha Shrine
Photo taken: Dyatimes,Summer



6 Anoshu Stone Stacking
Photo taken: Dyatimes,Spring



7 Yanagasaki Lakeside Park
Photo taken: Daytimes,Fall



8 Lake Biwa Canal and Cherry Blossoms
Photo taken: Dyatimes,Spring



9 Nagisa Park on a Holiday
Photo taken: Dyatimes,Summer



10 Seta River Promenade
Photo taken: Daytimes,Fall

Hira

Lake Resort Cycling Course

Pedal through magnificent nature while boats and parasols catch your eye during summer.

Tourism Association

acing the large window with view of Lake Biwa will make you wait a bit longer.

☎ 077-525-5516

🕒 Weekdays 11:00-17:00
Saturdays, Sundays and holidays 11:00-17:00

🗑 Mondays, second and third Tuesdays (except holidays and closed on the 2nd and 3rd of the month)

For more information on rental bikes, please contact us.

A Cafe Roz & Mary
Forest garden cafe for adults

Enjoy a relaxing time in a peaceful space in our green garden, savoring delicious pasta with Genoese sauce made from our homegrown organic herb garden and our chiffon cake baked fresh daily.

☎ 077-596-1690 ☎ Tuesdays to Thursdays (except holidays)
📅 11:00-18:00(L.O.17:00)
Saturdays, Sundays and holidays
11:00-19:00(L.O.18:00)

B R cafe
Beachside cafe with stunning lake views

Enjoy an extraordinary experience at our resort-themed interior and panoramic views of Lake Biwa and our original Hawaiian cuisine, burgers, and tropical drinks, all made by hand. Dogs are welcome to dine at outdoor seats.

☎ 077-596-1355 ☎ Thursdays (Open daily during summer, Closed on different days depending on the season.)
📅 Weekdays 11:00-18:00(L.O.17:00)
Saturdays and Sundays 7:00-19:00(L.O.18:00)
*Business hours vary by season. Please check our website for details.

C CURRY STAND 956
"Casual & solo dining friendly" curry shop

Our menu features 2 exceptional curries: a rich and spicy European-style "Pork" curry with a deep umami flavor, and a light "Chicken" curry made with a unique blend of spices with tender chicken and vegetables and a melty flavorful umami broth.

📍 11 a.m. to L.O. at around 2 p.m. *Closes once we sell out.
☎ Tuesdays
(Check our Instagram for any temporary closures.)





[illegible]

Cycling Tour around Historic Sites Course

Explore renowned “Hiyoshi Taisha Shrine,” “Saikyoji Temple” and “Ukimido” on the Lake.

A Jitensha Dokoro Doterushi
Professional shop for sport bikes



We are a specialty sport bike shop that specializes in quality and fun to enhance you and your bike's performance. We offer an enjoyable cycling experience with full after-sales support, events, and group rides.

- ☎ 07-576-5016
- 🗓 Tuesdays and Wednesdays
- 🕒 Regular business hours and reservation-only hours available.
- 📄 Please visit our website for more information.

B Delicious & Delightful
Direct sales stores for Shiga Lake specialties



We deliver fresh, locally sourced agricultural products straight to you. In our spacious stores, you'll find fresh agricultural and marine products, as well as processed foods, all made by local producers.

- ☎ 07-574-6161
- 🕒 9:00-18:00 (to 5:00 p.m. from December to February)
- 🗓 From December 31 to January 3

C Ramen Yoshichi
A must-try ultra-rich tonkotsu soup



Our thick tonkotsu (pork) soup made by simmering until the marrow of the bones melts, is known as a culinary masterpiece that has been selected as one of Japan's top 100 ramen restaurants. Our homemade, medium-thick curly noodles are the perfect complement to our soup, offering a truly satisfying experience.

- ☎ 07-574-4747
- 🕒 11:00-15:00 18:00-23:00
- 🗓 Open daily

D PecoRino
Exquisite Italian cuisine with a superb view



Enjoy our delicious weekly pasta specials and beef stew made with chocolate as a secret ingredient. Savor authentic Italian cuisine with a view of Ukimido.

- ☎ 07-572-8138
- 🗓 07-572-8138 (Closes at 9:00 p.m. on Fridays and Saturdays)
- 🗓 Mondays (or Tuesday if Monday is a holiday) and occasionally on Sundays

E Bonne Riziere
Enjoy our aromatic bread, freshly baked in a handcrafted stone oven.



The owner, a former French chef, makes artisan bread using natural yeast and sandwiches that unlock the chef's savory sensibilities of these highly recommended delights.

- ☎ 077-532-1341
- 🗓 10:00-18:00
- 🗓 Tuesdays

F Tsuruki Soba
A traditional taste of 300 years of history



Our experienced soba-making artisans delicately adjust the ratio of binding ingredients daily, considering ambient temperature, humidity, and the unique condition of the buckwheat flour. Authentic handmade soba served in a rich dashi broth, blended with Rishi kelp, mackerel, sardines, frigate tuna, and thickly shaved bonito flakes.

- ☎ 077-578-0002
- 🕒 11:00-18:00 (L.O.15:30)
- 📄 Please visit our website for more information.

For more information on rental bikes, please see the table on the back.

Legend

- 🚲 Bike Rental Facility
- 📷 Photo spot
- 🛒 Convenience store
- 🚻 Restroom
- 🏯 Hill
- 👉 Slightly steep
- 👉 Steep
- 👉 Very steep
- 📞 Phone number
- 📅 Closed days
- 🕒 Business hours

For more information on rental bikes, please see the table on the back.

This tourist facility offers a wide range of souvenirs from Lake Biwa Otsu, as well as a variety of dining options. After a long day of cycling, relax your tired feet in our free "foot bath," where mineral-rich spring water soothes muscle tension and soreness, leaving you feeling refreshed and revitalized.

Ogoto Onsen Kanko Park

Saikyoji Temple

Saikyoji Temple is the head temple of the Tendai Shinsei Sect, which has over 450 branch temples throughout Japan. The temple's path becomes a tunnel of cherry blossoms in the spring and autumn foliage in the fall, and offers breathtaking views of Lake Biwa. Saikyoji Temple is also historically significant as the family temple of the Akechi Mitsuhide clan.

Ukimido

"Ukimido," affectionately known as the floating pavilion because it appears to be floating on the lake, is a prominent scenic spot on Lake Biwa. Officially known as Kaimonsan Maetsuji Temple, it is a Zen Buddhist temple that was founded during the Heian period by the Enryakuji monk Eshin Sozu to pray for the safety of water transportation on the lake.

Hiyoshi Taisha Shrine

Hiyoshi Taisha Shrine is the head shrine of approximately 3,800 Hiyoshi, Hie, and Sanno shrines throughout Japan. The shrine is also known as one of the prefecture's best fall foliage spots, where maple trees display vibrant colors during the fall season.

E Bonne Riziere
6-15-4 Shimosakamoto, Otsu City

F Tsuruki Soba
4-11-40 Sakamoto, Otsu City

A Jitensha Dokoro Doterushi
359-3 Ono, Otsu City

B Biwako Ohashi Kome Plaza
Delicious & Delightful
Biwako Ohashi Kome Plaza, 3-1-1 Inakata, Otsu City, Shiga Prefecture

C Ramen Yoshichi
2-40-25 Inakata, Otsu City

D PecoRino
1-18-5 Honkatata, Otsu City



Map showing the route from Ogoto Onsen Kanko Park to Hiyoshi Taisha Shrine, passing through Saikyoji Temple, Ukimido, and Hiyoshi Taisha Shrine. The route is marked with a red line and includes a compass rose and scale bar.

Ishivama Refreshing! Riverside Course

Explore "Ishiyamadera Temple," the Temple of Flowers associated with Murasaki Shikibu, and cross "Seta no Karahashi Bridge," one of Japan's Three Great Bridges.

A Karando
A hideaway cafe with a nostalgic atmosphere
Our popular kakigori (shaved ice) is available only in the summer, from mid-April to late October (planned). Warm and sweet dishes such as "Yame Tea" sweets and mochi sweets are only available in the winter, from mid-November to late March (planned).

- ☎ 077-537-7433
- 🕒 10:00-16:00(L.O.15:30) *Cafe service closes once we sell out.
- 🗓 Every Monday, Tuesday, and Wednesday

B Restaurant Matsukiya
Experience the finest Omi beef at a long-established specialty restaurant.

- ☎ 077-534-2901
- 🍽 Lunch 11:30-15:00(L.O.14:00)
Dinner 17:00-22:00(L.O.20:00)
- 🚫 Open daily (except during the year-end/New Year holidays, and occasional closures)

C Unagi Ryotei Yamaju
Taste the time-honored flavors from the Mumochi era.

- ☎ 0120-13-8103
- 🕒 11:00-15:00(L.O.14:00) 17:00-21:00(L.O.20:00)
- 🗓 Tuesdays

D Cafe Restaurant Adria
With a scenic view of the flowing Seta River.

- ☎ 077-533-3355
- 🗓 Tuesdays to Fridays 11:00-17:00(L.O.18:30)
Saturdays, Sundays and holidays 11:00-17:00(L.O.18:30)
- 🗓 Every Monday and third Tuesday

E Sajo-towson
Mochi, azuki, and walnuts in a delightful harmonic balance.

- ☎ 077-533-3900
- 🕒 10:00-17:00
- 🚫 Closed on Tuesdays (except public holidays)

Setsu no Karahashi Bridge
Setsu no Karahashi Bridge holds a place among Japan's Three Great and Ancient Bridges, along with Uji-bashi Bridge and Yamasaki Bridge in Kyoto. The riverbanks here are a key hub for Kansai boaters, offering a lively view as they pass under the bridge working their powerful rowing strokes.

Ishiyamadera Temple
Ishiyamadera Temple, known as the "Temple of Flowers," showcases the beauty of seasonal flowers throughout the year. This temple is also closely associated with Murasaki Shikibu, the author of "The Tale of Genji."

Nango Hotaru Bridge

Seta River New Port

Seta River Bridge

Seta no Karahashi Bridge

Seta River

Seta River Greenery Area

Serikicho

Ishiyamadera Tourist Information Office

Koto Bypass

Meishin Expressway

Head towards Seta River New Port

Pass under the national highway bridge

Go down to the riverside path

To Ishiyamadera Temple, take the bike path that runs parallel to the national highway leading to the temple.

Local businesses (please drive carefully)

Cross the national highway bridge

Turn left. Road with limited visibility. Take extra precaution.

Fisheries Center

Nango

Seta River Wall

Legend

- 🚲 Bike Rental Facility
- 🏪 Convenience Store
- 🚻 Restroom
- ☎ Phone Booth
- 📷 Photo Spot
- 🔒 Closed
- 🗓 Holiday
- 💼 Business Hours

*For more information on rental bikes, please see the table on the back.